



SUBURBAN EXTENDED STAY HOTEL INTERIOR SIGNAGE PACKAGE

CONTACT:
DIANA WILLIAMSON
 316-267-4171 ext. 273
 316-267-6883 FAX
 dwilliamson@gsi-graphics.com

We Make Ordering Easy!

WAYFINDING

Send Graphics Systems, Inc. your hotel's floorplan and let us assist with your signage order. Our experienced wayfinding staff will determine your property's specific requirements and provide you with a detailed plan that includes a graphic of each sign, sign type, quantity, price and location, all in an easy to read format.

NO DESIGN FEES

Our talented design team will create any additional signage you require, including state and local code signage, free of charge.

NO MAP CHARGES

Our professional artists will draw your fire evacuation maps free of charge. Just send us your floorplans and we'll do the rest.

COLOR OPTIONS

Standard: Suburban Red and Suburban Blue on White Background



Alternate: Suburban Red and Pantone 464 Brown on Pantone 614 Beige Background



See sign package color options below at left.

Guest Room Signage



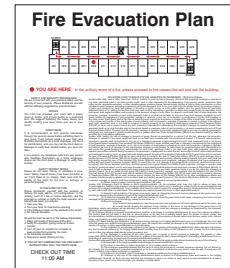
6" x 4"
 GRN0604 SUB
 Large Guest Room Number



4-1/2" x 3"
 GRN0503 SUB
 Small Guest Room Number

- Accessible
- No Smoking
- Hearing Impaired

1-1/2" x 1-1/2"
 SYM0202
 Symbol, to be mounted under guestroom number



8-1/2" x 11"
 FEP0911B MA
 Guest Room Evacuation with State Laws

Identification Signage



6" x 4"
 ID0604 SUB
 Room Identification



4-1/2" x 6"
 STR0506 SUB
 Stair Identification



6" x 9"
 RR0609 SUB
 Restroom Identification

Informational Signage



8" x 10-3/4"
 FEP0811 SUB
 Elevator Fire Evacuation Plan, Ground Floor



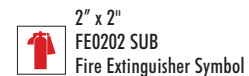
9" x 11"
 INF0911 SUB
 Hours Informational



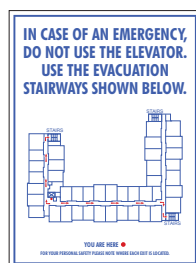
6" x 4-1/2"
 INF0605 SUB
 Informational



5" x 4"
 KEY0504 SUB
 Key Card Informational



2" x 2"
 FE0202 SUB
 Fire Extinguisher Symbol



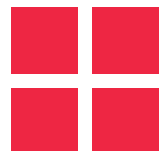
8" x 10-3/4"
 FEP0811 SUB
 Elevator Fire Evacuation Plan, Upper Floors



9" x 10"
 PRK0910 SUB
 Parking Informational



10" x 14"
 INF1014 SUB
 Owner Operator Informational



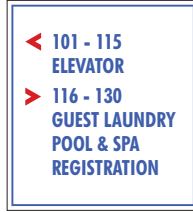
Directional Signage



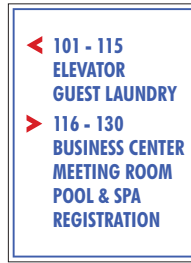
8" x 4-1/2"
DIR0805 SUB
Directional, 1-2 Lines



8" x 6-3/4"
DIR0807 SUB
Directional, 3-4 Lines



8" x 8-3/4"
DIR0809 SUB
Directional, 5-6 Lines

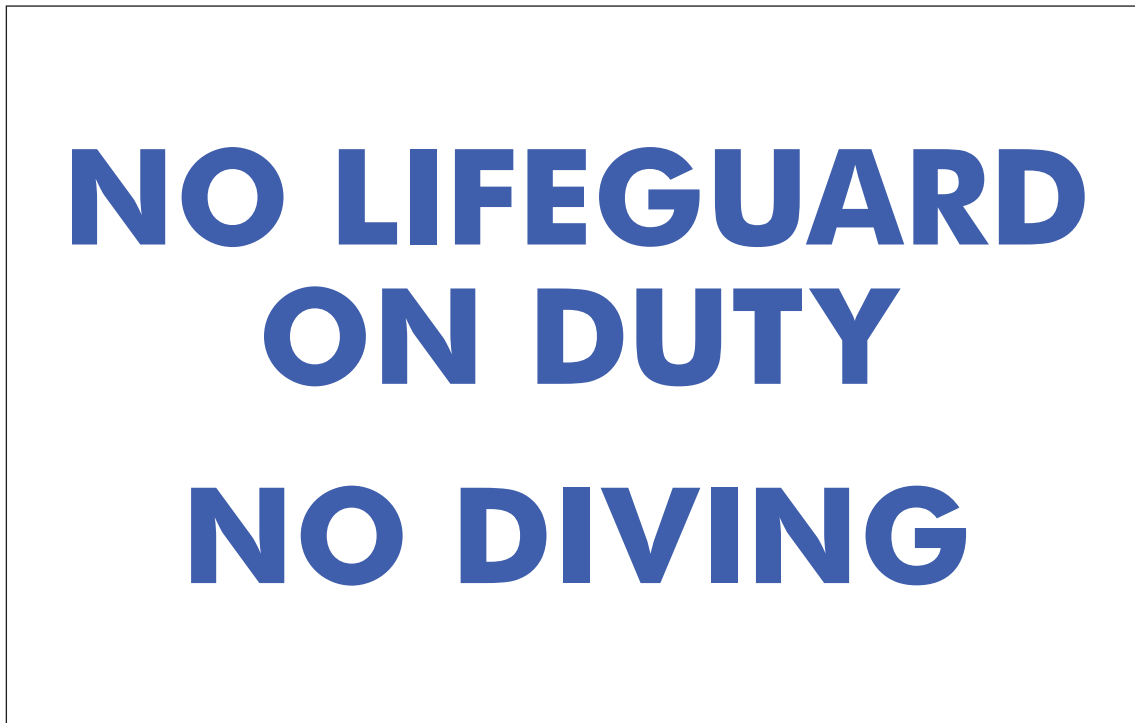


8" x 10-3/4"
DIR0811 SUB
Directional, 7-8 Lines

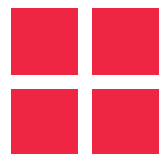


18" x 12"
DIR1812 SUB
Large Exterior Directional

Pool and Spa Signage



47-1/2" x 30"
POL4830 SUB
Pool Informational



Pool and Spa Signage continued



18" x 18"
POL1818 SUB
No Diving Symbol

WHIRLPOOL SPA USE
FOR YOUR SAFETY, IT IS REQUIRED THAT YOU
OBSERVE THE FOLLOWING:

- REGISTERED GUESTS ONLY.
- INDIVIDUALS UTILIZING THIS FACILITY DO SO AT THEIR OWN RISK.
- WARNING - NO CONSUMPTION OF ALCOHOLIC BEVERAGES OR FOOD IS PERMITTED IN POOL AREA.
- IT IS HIGHLY RECOMMENDED THAT THE FOLLOWING INDIVIDUALS NOT USE THE WHIRLPOOL SPA: A) PERSONS WITH PRESENT OR PRIOR HEART DISEASE, HIGH BLOOD PRESSURE, OR ANY CHRONIC HEALTH PROBLEMS. B) PERSONS UNDER THE INFLUENCE OF ALCOHOL, STIMULANTS OR DEPRESSANTS. C) PREGNANT WOMEN. D) ELDERLY PERSONS. E) CHILDREN UNDER THE AGE OF 10. F) UNSUPERVISED CHILDREN UNDER THE AGE OF 15.
- SHOULD YOU NEED ANY ASSISTANCE, PLEASE CONTACT MANAGEMENT.
- WARNING: CHEMICAL AND PH LEVELS ARE IN ACCORDANCE WITH LOCAL CODES AND MEASURED REGULARLY. HOWEVER, HIGH HEAT AND CHEMICAL IN THIS SPA MAY CAUSE FADING AND/OR DAMAGE TO CERTAIN FABRICS.
- ALWAYS PRACTICE WATER SAFETY AND COURTESY TO OTHERS.
- REPORT ANY UNSAFE CONDITIONS TO THE MANAGEMENT.
- ALL PERSONS SHALL BATHE WITH WARM WATER AND SOAP BEFORE ENTERING SPA.
- ANY PERSONS KNOWN OR SUSPECTED OF HAVING A COMMUNICABLE DISEASE SHALL NOT USE SPA.
- SPITTING OR BLOWING THE NOSE IN THE SPA IS PROHIBITED.
- DO NOT USE ALONE.
- OBSERVE A REASONABLE TIME LIMIT, (PREFERABLY NOT LONGER THAN 15 MINUTES), THEN SHOWER, COOL DOWN AND IF YOU WISH, RETURN FOR ANOTHER BRIEF STAY. LONG EXPOSURES MAY RESULT IN NAUSEA, DIZZINESS OR FAINTING.
- FOOD AND GLASS OBJECTS ARE NOT PERMITTED IN SPA AREA.
- MAXIMUM TEMPERATURE 104° FAHRENHEIT.

MAXIMUM BATHING LOAD

6

THANK YOU FOR YOUR ATTENTION
AND COOPERATION.

23-1/2" x 22"
SPA2422 SUB
Spa Area Use



POOL

OPERATING HOURS:
8:00 AM TO 10:00 PM

**GLASS IS NOT PERMITTED
IN THE POOL AREA**

**POOL IS FOR CUSTOMERS
AND THEIR GUESTS ONLY**

18" x 20"
POL1820 SUB
Pool Informational

POOL AREA USE
FOR YOUR SAFETY, IT IS REQUIRED THAT YOU
OBSERVE THE FOLLOWING:

- REGISTERED GUESTS ONLY.
- ALL CHILDREN UNDER 14 MUST BE WITH AN ADULT.
- RUNNING AND HORSEPLAY ARE PROHIBITED.
- APPROPRIATE SWIM WEAR REQUIRED.
- DIVING STRICTLY PROHIBITED.
- SHIRTS AND SHOES REQUIRED IN THE HOTEL LOBBY.
- GLASSWARE IS NOT PERMITTED WITHIN THE POOL AREA.
- ONLY FLEXIBLE SWIM-AIDS ARE PERMITTED.
- BE AWARE OF DEPTH MARKINGS AT ALL TIMES.
- REPORT ANY UNSAFE CONDITIONS OR VIOLATIONS TO THE MANAGEMENT IMMEDIATELY.
- INDIVIDUALS ASSUME THE RISK FOR ANY INJURIES SUSTAINED WHILE USING POOL FACILITIES.
- ALWAYS PRACTICE WATER SAFETY AND COURTESY.
- SHOWER BEFORE ENTERING POOL.
- CHILDREN WHO ARE NOT TOILET TRAINED MUST WEAR SWIM DIAPERS WITH RUBBER PANTS OVER THEM.

THANK YOU FOR YOUR ATTENTION AND COOPERATION.

23-1/2" x 20"
POL2420 SUB
Pool Area Use

