

HAWTHORN

HAWTHORN INTERIOR SIGNAGE PACKAGE

We Make Ordering Easy!

WAYFINDING

Send Graphics Systems, Inc. your hotel's floorplan and let us assist with your signage order. Our experienced wayfinding staff will determine your property's specific requirements and provide you with a detailed plan that includes a graphic of each sign, sign type, quantity, price and location, all in an easy to read format.

NO DESIGN FEES

Our talented design team will create any additional signage you require, including state and local code signage, free of charge.

NO MAP CHARGES

Our professional artists will draw your fire evacuation maps free of charge. Just send us your floorplans and we'll do the rest.

Guest Room Signage



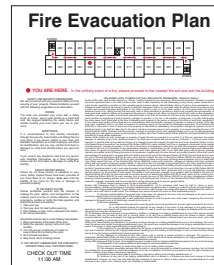
5" x 4"
1.0 HAW
Room Number



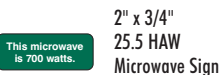
2-1/2" x 2-1/2"
2.0 HAW
No Smoking Symbol



2-1/2" x 2-1/2"
3.0 HAW
Accessible Symbol



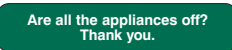
9" x 11"
12.0 HAW
Guest Room Evacuation
with State Laws



2" x 3/4"
25.5 HAW
Microwave Sign



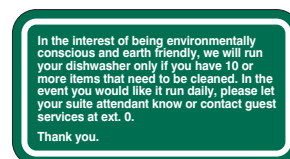
2" x 1"
25.8 HAW
Modem Sign



5" x 1"
25.4 HAW
Appliance Sign



10" x 8"
30.0 HAW
Environmental Sign



6" x 3-1/4"
29.0 HAW
Dishwasher Informational

Identification Signage



9" x 2-1/2"
6.0 HAW
Small Room Identification



9" x 3-1/2"
6.1 HAW
Large Room Identification



6" x 8"
4.0 HAW
Restroom Identification



8" x 10"
7.0 HAW
Stair Identification



7" x 9"
7.1 HAW
Interior Stairwell ID



9" x 9"
9.0B HAW
In Case Of Fire

Parking Signage



7-1/2" x 6"
19.0 HAW
Hotel Van Sign



8-1/4" x 9"
18.0 HAW
Parking Informational



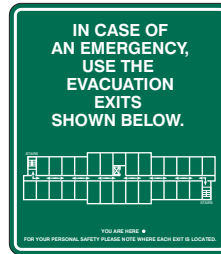
Informational Signage



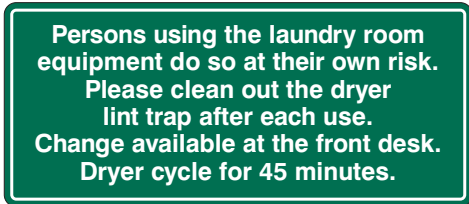
8" x 4"
22.0 HAW
Small Informational,
Maximum Occupancy



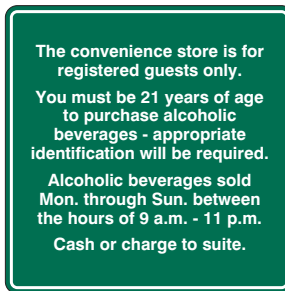
14" x 8"
21.0 HAW
Breakfast Hours Informational
(Alternate Version Available w/out
Beverage Information - 21.1 HAW)



9-1/4" x 10-1/2"
FEPO911 HAW
Elevator Evacuation Plan



19-1/2" x 8-1/2"
13.0 HAW
Guest Laundry Informational



12" x 12"
17.0 HAW
Convenience Store Informational



4-1/4" x 2-1/2"
23.0 HAW
Hotel Informational



6" x 3"
15.0 HAW
Key Card Informational

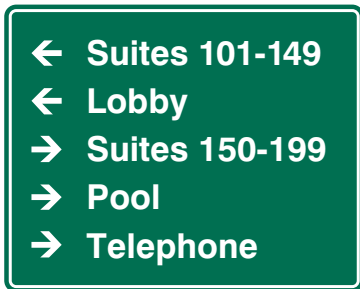
Directional Signage



15" x 5-1/4"
5.0 HAW
1 Line Directional



15" x 8"
5.1 HAW
2 Line Directional



15" x 12"
5.2 HAW
3 - 5 Line Directional

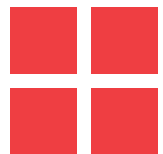


15" x 13"
5.2.2 HAW
6 Line Directional

15" x 15"
5.2.3 HAW
7 Line Directional (Not Shown)

15" x 17"
5.2.4 HAW
8 Line Directional (Not Shown)

15" x 19"
5.2.5
9 Line Directional (Not Shown)



Front Desk Signage



8" x 8-1/2"
8.1 HAW
Reception Informational



10" x 10"
10.2 HAW
Owner/Operator Sign w/ Insert
(Also Available w/out Insert)

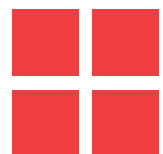


10" x 1-1/2"
10.2 INS HAW
Owner/Operator Insert

Podium Signage



18" x 5"
16.0 HAW
Podium Logo Sign



Health Club Signage

Persons using this facility do so at their own risk.
Exercise Room for registered guests only.
Report any unsafe conditions to the manager.
Persons should not perform exercise routines unless physically qualified and have a physician's approval to do so.
It is recommended that persons under the influence of alcohol, stimulants or depressants should not use the exercise equipment.
Children under the age of 16 require parental supervision.
Equipment should be used in the presence of others.
Always practice safety and courtesy to others.
Shoes and appropriate exercising clothing are required.
No smoking.
In case of an emergency, dial 0 for the Hotel Operator.

20" x 20"
27.0 HAW
Exercise Room Rules

Sport Court[®] for registered guests only.
Persons using the Sport Court[®] do so at their own risk.
Children under the age of 12 require parental supervision.
Appropriate sport shoes required.
Sport Court[®] equipment available at the Front desk.
Sport Court[®] hours are: 9 a.m. - 10 p.m.

15-1/2" x 9-5/8"
26.0 HAW
Sport Court Rules

The Barbecue Area is for registered guests only.
Persons using the barbecue area do so at their own risk.
Children under the age of 16 using the grills require parental supervision.
Barbecue Area hours are: 9 a.m. - 10 p.m.

15-1/2" x 7-3/4"
26.1 HAW
Barbecue Area Informational

Please shower before using spa.
Spa for use by registered guests only.
The consumption of alcoholic beverages in the spa area is not allowed.
Children under the age of 16 require parental supervision.
No running or diving.
No glass allowed in spa area.
Maximum number of people allowed in spa is Ten (10).
No pets allowed in the spa or spa area.
Persons with the following conditions should not use the spa without a doctor's authorization:
High/low blood pressure
Under the influence of drugs or medication
Diabetic
Pregnant
Heart Disease

22-1/8" x 17"
28.0 HAW
Spa Rules

Pool for use by registered guests only.
Children under the age of 16 must be accompanied by an adult.
Swim at your own risk.
No lifeguard on duty.
No running or horseplay. No diving.
No glass or other breakable items allowed in pool area.
No pets allowed in pool or pool area.
Pool hours are 9 a.m. to 8 p.m.

22" x 13"
14.0 HAW
Pool Use Informational

